

RESEARCH ARTICLE

Geothermal stickleback populations prefer cool water despite multigenerational exposure to a warm environment

Natalie Pilakouta^{1,2}  | Shaun S. Killen¹  | Bjarni K. Kristjánsson³ | Skúli Skúlason^{3,4} | Jan Lindström¹ | Neil B. Metcalfe¹ | Kevin J. Parsons¹

¹Institute of Biodiversity, One Health, and Veterinary Medicine, University of Glasgow, Glasgow, UK

²School of Biological Sciences, University of Aberdeen, Aberdeen, UK

³Department of Aquaculture and Fish Biology, Hólar University, Sauðárkrúkur, Iceland

⁴Icelandic Museum of Natural History, Reykjavík, Iceland

Correspondence

Natalie Pilakouta, Zoology Building, Tillydrone Ave, Aberdeen, AB24 2TZ, UK. Email: natalie.pilakouta@abdn.ac.uk

Kevin J. Parsons, Graham Kerr Building, University Ave, Glasgow, G12 8QQ, UK. Email: kevin.parsons@glasgow.ac.uk

Funding information

Natural Environment Research Council, Grant/Award Number: NE/N016734/1

Abstract

Given the threat of climate change to biodiversity, a growing number of studies are investigating the potential for organisms to adapt to rising temperatures. Earlier work has predicted that physiological adaptation to climate change will be accompanied by a shift in temperature preferences, but empirical evidence for this is lacking. Here, we test whether exposure to different thermal environments has led to changes in preferred temperatures in the wild. Our study takes advantage of a “natural experiment” in Iceland, where freshwater populations of threespine sticklebacks (*Gasterosteus aculeatus*) are found in waters warmed by geothermal activity year-round (warm habitats), adjacent to populations in ambient-temperature lakes (cold habitats). We used a shuttle-box approach to measure temperature preferences of wild-caught sticklebacks from three warm–cold population pairs. Our prediction was that fish from warm habitats would prefer higher water temperatures than those from cold habitats. We found no support for this, as fish from both warm and cold habitats had an average preferred temperature of 13°C. Thus, our results challenge the assumption that there will be a shift in ectotherm temperature preferences in response to climate change. In addition, since warm-habitat fish can persist at relatively high temperatures despite a lower-temperature preference, we suggest that preferred temperature alone may be a poor indicator of a population's adaptive potential to a novel thermal environment.

KEYWORDS

climate change, *Gasterosteus aculeatus*, temperature preference, thermal adaptation, thermoregulatory behavior, threespine stickleback

TAXONOMY CLASSIFICATION

Behavioural ecology, Ecophysiology, Evolutionary ecology, Global change ecology, Zoology

1 | INTRODUCTION

Climate change poses a substantial threat to biodiversity, as rising temperatures are altering abiotic and biotic conditions, and, in

turn, imposing novel selection pressures on organisms (Crozier & Hutchings, 2014). In light of this, there is now a pressing need to understand the capacity of populations to respond and adapt to increasing temperatures (Crozier & Hutchings, 2014). Due to their

This is an open access article under the terms of the [Creative Commons Attribution](https://creativecommons.org/licenses/by/4.0/) License, which permits use, distribution and reproduction in any medium, provided the original work is properly cited.

© 2023 The Authors. *Ecology and Evolution* published by John Wiley & Sons Ltd.

lability, behavioral responses can play a role in facilitating or hindering adaptation to new thermal environments, depending on certain attributes of the species and environmental conditions (Sih et al., 2011; Tuomainen & Candolin, 2011; van Jaarsveld et al., 2021).

Thermoregulatory behavior could be especially important in the context of climate change, as it allows animals to buffer the effects of temperature changes by choosing suitable microhabitats (Fangue et al., 2009; Huey et al., 2012; Kearney et al., 2009). Animals usually seek temperatures that coincide with their optimal physiological performance and growth, which tends to be determined by their thermal evolutionary history (Díaz et al., 2007; Jobling, 1981; Kellogg & Gift, 1983; Köhler et al., 2011; Pörtner & Farrell, 2008; but see Buckley et al., 2022; Huey & Bennett, 1987; Martin & Huey, 2008). Thermoregulatory behavior is particularly important in ectotherms because ambient temperature directly influences their body temperature, making them vulnerable to temperature changes (Zuo et al., 2011). Thus, it has been proposed that ectotherms should adapt to increasing environmental temperatures through shifts in temperature preferences that accompany evolutionary changes in their physiology (Catullo et al., 2019; Gilbert & Miles, 2017; Kearney et al., 2009; Logan et al., 2018). Yet, it is still unclear whether temperature preference has the capacity to evolve in response to long-term changes in the thermal environment (Logan et al., 2018; Paranjpe et al., 2013).

We addressed this by testing whether exposure to a warm environment over multiple generations in the wild leads to the evolution of higher preferred temperatures. We used a unique “natural experiment” in Iceland, where freshwater populations of threespine sticklebacks (*Gasterosteus aculeatus*) are found in waters warmed by geothermal activity (warm habitats) adjacent to populations in ambient-temperature lakes (cold habitats). This study system provides repeated examples of populations experiencing long-term contrasting thermal environments over a small geographic scale, thereby avoiding the confounding factors associated with latitudinal or elevational comparisons. There is evidence for strong divergence in the physiology of sticklebacks from these habitats, with warm populations showing a lower standard metabolic rate than cold populations when compared at the same temperature (Pilakouta et al., 2020). In addition, we have demonstrated heritable divergence in morphology, with sticklebacks from warm habitats being more deep bodied with shorter jaws (Pilakouta et al., 2023). Warm-habitat sticklebacks also tend to be less social (Pilakouta et al., 2023). Together, the consistency of these changes across populations suggests that they are undergoing adaptive divergence.

Given that standard metabolic rate and temperature preference have previously been shown to be negatively correlated (Killen, 2014), we predicted that fish from warm habitats would prefer higher water temperatures than fish from cold habitats. We also expected that this potential divergence in temperature preference may be more pronounced in populations that have been exposed to warm water for more generations. Lastly, we examined individual

activity to determine whether inter-individual variation in activity can explain differences in temperature preferences (Killen, 2014).

2 | METHODS

2.1 | Study animals

We collected adult threespine sticklebacks from six freshwater populations in Iceland from May to June 2016 (Table 1, Figure 1). Two of these populations were allopatric, meaning that the warm and cold habitats were in neighboring but separate water bodies with little to no potential for gene flow (Table 1). Because these populations were both located in close proximity to the marine habitat (and were thus more likely to be directly invaded by a common marine ancestor), we considered them a comparable warm–cold “population pair.” We also sampled two sympatric warm–cold population pairs, where the warm and cold habitats were in the same water body with no physical barriers between them (Table 1). Warm- and cold-habitat sticklebacks differ in their morphology and physiology both in sympatry and allopatry (Pilakouta et al., 2020, 2023).

The cold habitats have likely existed for thousands of years since the last glacial period (Einarsson et al., 2004), but there is some variation in the age of the warm habitats (Table 1). The “Mývatn warm” and Grettislaug sites have been naturally heated by geothermal activity for over 2000 years (Einarsson, 1982; Hight, 1965). In contrast, the “Áshildarholtsvatn warm” population originated only 50–70 years ago, fed by excess hot water runoff from nearby residences using geothermal heating. Since the generation time for threespine sticklebacks is about 1 year, the age of the warm habitats corresponds to the maximum number of generations each population pair may have been separated (Table 1). These different timescales made it possible to qualitatively infer whether populations exposed to higher temperatures for a relatively short time have diverged in temperature preference to the same extent as much older populations.

2.2 | Animal husbandry

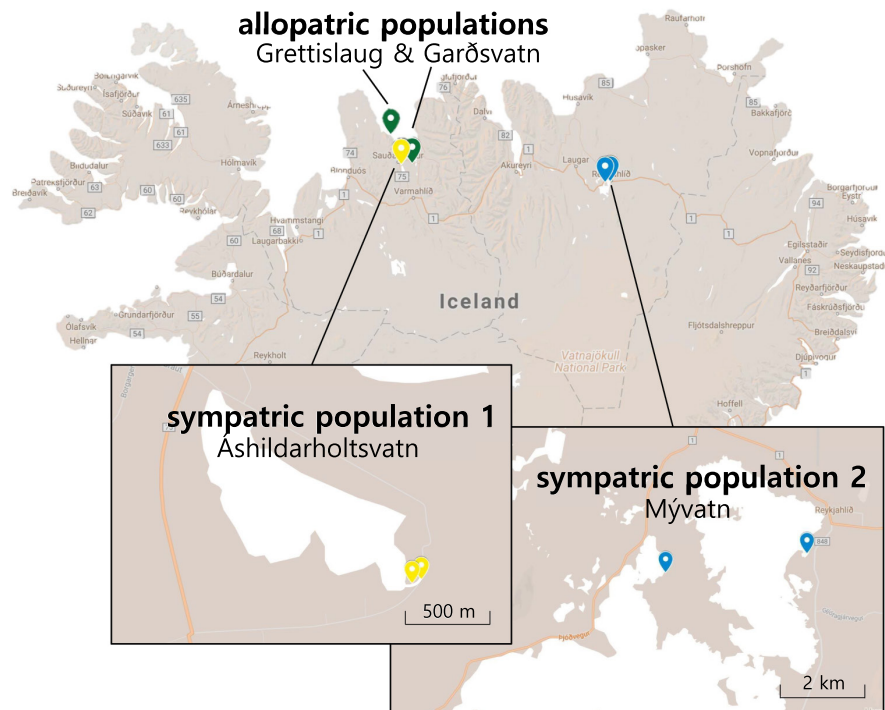
We placed 15 individuals from each population in 10-l tanks in a common recirculation system. They were fed ad libitum twice a day with a mixture of frozen bloodworms, *Mysis* shrimp, and *Daphnia*. Before the experiment, all fish were anesthetized using benzocaine and marked with visible implant elastomer tags (Northwest Marine Technology Inc) to allow individual identification. They were kept at 15°C and a 12h:12h daylight cycle for at least 1 month before being used in the experiment. The acclimation temperature of 15°C was chosen because it is an intermediate temperature for the warm and cold populations (Pilakouta et al., 2020). It is close to the maximum temperature experienced by cold populations in the summer and the minimum temperature experienced by warm populations in the winter (Table 1).

TABLE 1 Sampling locations of warm- and cold-habitat sticklebacks collected in May–June 2016.

Population pair	Waterbody	Thermal habitat	Age of warm habitat	Distance (km)	Summer temperature (°C)	Winter temperature (°C)	Sample size
Allopatric populations	Grettislaug	Warm	Old	21.04	24.9	13.5	10
	Garðsvatn	Cold			14.6	2.2	10
Sympatric population 1	Áshildarholtsvatn	Warm	Young	0.05	24.1	12.5	10
		Cold				12.2	3.4
Sympatric population 2	Mývatn	Warm	Old	3.18	22.8	22.0	10
		Cold				11.5	1.0

Note: Distance refers to how far apart the warm-habitat and cold-habitat sample sites are for each warm–cold pair. All cold habitats have existed since the last glacial period and are therefore approximately 10,000 years old, whereas warm habitats can be classified as either young (<100 years old) or old (>1000 years old). The summer and winter temperatures listed are the average water temperatures recorded at each sampling location during the summer and winter, respectively.

FIGURE 1 Map of Iceland showing the sampling locations of warm- and cold-habitat sticklebacks we collected for this study. Each of the three population pairs is indicated by a different color.



2.3 | Experimental set-up

We tested each individual's temperature preference using a classical shuttle-box approach in which the animal is allowed to behaviorally adjust the temperature of its surroundings (MacNaughton et al., 2018; McCauley, 1977; Schurmann & Steffensen, 1992; Westhoff & Rosenberger, 2016). Our shuttle-box apparatus (Loligo Systems) consisted of two circular 40-cm-diameter choice chambers joined by a 10-cm passageway (Killen, 2014). The left chamber was designated as the warm chamber and the right one as the cold chamber. Each choice chamber was filled with water to a depth of 7 cm and was attached to its own external buffer tank. The set-up also included a heating reservoir, kept at 30°C using aquarium heaters, and a cooling reservoir, kept at 4°C by an external chilling unit. To adjust the temperature within each buffer tank, water was pumped from the buffer tanks through steel coils in the heating and cooling

reservoirs. The water temperature in the two choice chambers was continually monitored using in-line temperature probes connected to a computer-driven temperature controller and data acquisition system (DAQ-M; Loligo Systems). In turn, the temperature within each chamber was controlled by software (ShuttleSoft; Loligo Systems), which adjusted the flow from reservoir tanks to change the temperature in the choice chambers as required.

We used two ways of adjusting temperatures in the shuttle box: a static mode and a dynamic mode. In the static mode, there was a constant temperature in each choice chamber with a 2°C differential between them. In the dynamic mode, the warm and cold chamber temperatures changed depending on the location of the focal fish but always maintained a 2°C differential. When a fish moved into the warm chamber, the temperature increased at a rate of 2°C/h in both chambers, whereas when a fish moved into the cold chamber, the temperature decreased at a rate of 2°C/h in both chambers.

Thus, by moving between the warm and cold chambers in response to changing temperatures, fish could regulate the water temperature they experienced (Killen, 2014; Schurmann & Steffensen, 1992). Fish movements were tracked using a camera (uEye; Imaging Development Systems GmbH) mounted above the shuttle box.

2.4 | Experimental protocol

All experimental fish were non-breeding, uninfected adults with their mass ranging from 0.74 to 3.02 g (mean \pm SD = 1.82 ± 0.54). Our sample size was $n = 10$ for each population (total $n = 60$). Because feeding history can influence preferred temperature, all fish were fasted for the same amount of time (36 h) before the temperature preference test (Killen, 2014).

For the test, a single fish was placed in the shuttle box at static mode, with the cold chamber at 14°C and the warm chamber at 16°C. The fish was left to acclimate overnight with the lights off. The following morning, we turned on the lights at 9:00 and allowed the fish to acclimate for one additional hour. From 10:00 a.m. to 6:00 p.m., the system was set to dynamic mode, and the fish was allowed to select its preferred temperature. During this time, we also collected data on each individual's activity (total distance moved).

Core body temperature (T_b) was calculated using the following equation (Killen, 2014): $T_b = T_a + (T_i - T_a) * e^{-kt}$. Here, T_a is the current water temperature experienced by the fish, T_i is the previous temperature it experienced, t is the time elapsed since experiencing that previous water temperature, and k is the rate coefficient for thermal equilibration. The rate coefficient k varies with body size and is defined as the instantaneous rate of change in body temperature in relation to the difference between T_a and T_b (Pépin et al., 2015). We calculated k using the equation $k = 3.69 * m^{-0.574}$, where m denotes mass (Stevens & Fry, 1974). The final preferred temperature of each individual was calculated as the mean core body temperature experienced during the final 2 h of the test when the system was in dynamic mode (Killen, 2014).

2.5 | Data analysis

R version 3.5.1 was used for all statistical tests (R Core Team, 2018), and the ggplot2 package was used for generating figures (Wickham, 2016). To test for differences in temperature preference and activity, we used linear models with the following explanatory variables: body mass, population pair (allopatric populations, sympatric population 1, or sympatric population 2; as defined in Table 1), thermal habitat at population of origin (warm or cold), and the interaction between population pair and thermal habitat. Statistical results reported below are the values from the full models for temperature preference and activity. We also tested for a correlation between the activity level and preferred temperature of each individual (Killen, 2014).

3 | RESULTS

There was considerable variation in preferred temperature among individuals, ranging from 8.0 to 15.8°C (Figure 2). However, there was no difference in mean preferred temperature between sticklebacks collected from warm versus cold habitats ($F_{1,54} = 1.03$, $p = .31$). This finding is unlikely to be due to low statistical power given that the absolute differences in mean preferred temperature between thermal habitats were very small (Figure 2). There was also no evidence for a greater divergence in temperature preference in populations exposed to warm water for more generations (Figure 2). Lastly, temperature preference was not influenced by body mass ($F_{1,54} = 1.29$, $p = .26$), population pair ($F_{2,54} = 0.03$, $p = .97$), or the interaction between population pair and thermal habitat ($F_{2,54} = 2.87$, $p = .07$).

Similarly, we found no differences in activity between fish from warm and cold habitats ($F_{1,54} = 0.152$, $p = .70$; Figure 3) or between fish from different population pairs ($F_{2,54} = 0.66$, $p = .52$; Figure 3). Activity also did not depend on body mass ($F_{1,54} = 0.003$, $p = .95$) or the interaction between population pair and thermal habitat ($F_{2,54} = 2.37$, $p = .10$). Despite a positive trend, there was no

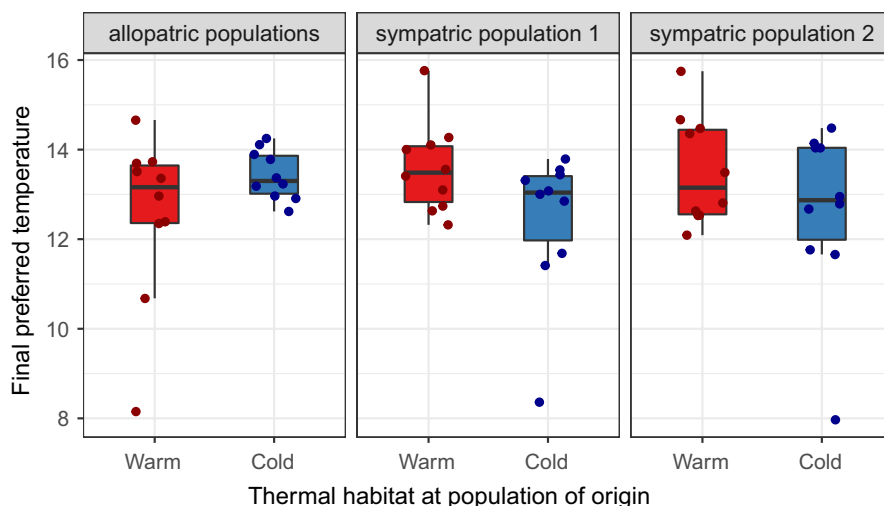


FIGURE 2 Boxplots of final preferred temperatures (°C) for warm-habitat (red) and cold-habitat (blue) sticklebacks from three population pairs ($n = 10$ for sampling location). Filled circles represent individual data points. “Allopatric populations” refers to Grettislaug and Garðsvatn, “sympatric population 1” refers to Áshildarholtsvatn, and “sympatric population 2” refers to Mývatn.

FIGURE 3 Boxplots of individual activity level (distance traveled in m/hr) of warm-habitat (red) and cold-habitat (blue) sticklebacks from three population pairs ($n = 10$ for each sampling location). Filled circles represent individual data points. “Allopatric populations” refers to Grettislaug and Garðsvatn, “sympatric population 1” refers to Áshildarholtsvatn, and “sympatric population 2” refers to Mývatn.

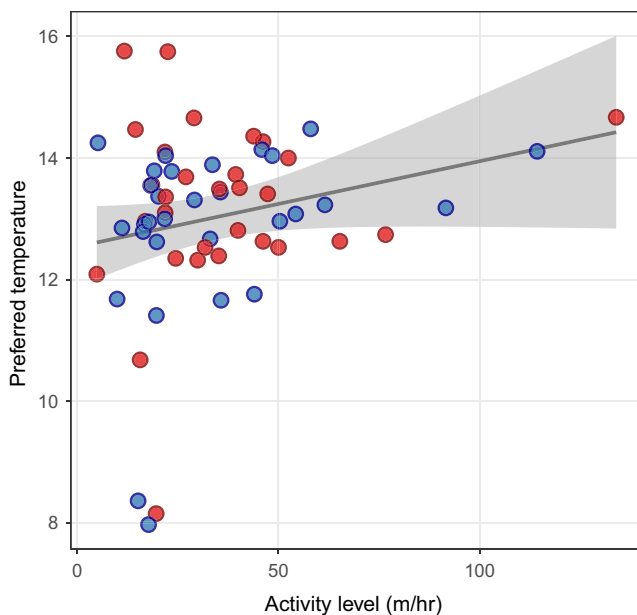
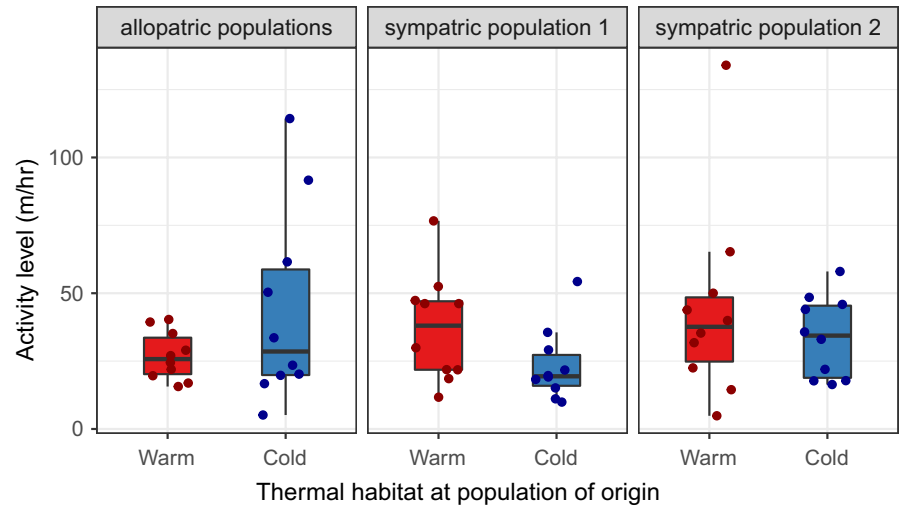


FIGURE 4 Scatterplot and regression line for the relationship between temperature preference ($^{\circ}\text{C}$) and activity level (distance traveled in m/h) of warm-habitat (red) and cold-habitat (blue) sticklebacks. The gray shaded area shows the 95% confidence interval.

statistically significant relationship between individual activity and temperature preference ($t_{50} = 1.81$, $r = 0.23$, $p = .076$; Figure 4).

4 | DISCUSSION

Contrary to our hypothesis, fish from warm habitats did not prefer higher water temperatures than fish from cold habitats when acclimated to a common temperature. There was also no evidence for a larger difference in temperature preference between warm- and cold-habitat fish from old populations than from young populations. Average preferred temperature was the same for warm- and cold-habitat fish from allopatric and sympatric populations. Thus, the

absence of a difference in sympatric populations is not necessarily due to gene flow constraining adaptation. Lastly, we found no differences in activity between fish from warm and cold habitats, and there was no relationship between activity and temperature preference.

In this study system, populations in the cold habitats likely represent the ancestral populations of those in the warm habitats. Therefore, we considered the average preferred temperature of the cold-habitat fish (13°C) to be the ancestral state. On this basis, our results suggest that temperature preference has not diverged in warm-habitat populations even after being exposed to elevated temperatures for hundreds to thousands of years. This finding is in line with a recent study showing that frogs inhabiting Japanese hot springs prefer cooler water when given the option (Komaki et al., 2020). A similar compensatory response has been observed in the social spider *Stegodyphus dumicola* (Malmos et al., 2021). One explanation for these patterns is that there is a lack of genetic variation in traits associated with temperature preference. Although this may seem surprising, it is consistent with prior work showing low to no heritability of temperature preferences. For example, there is evidence that non-genetic factors may play a more important role in some species. In side-blotched lizards (*Uta stansburiana*), maternal effects but not additive genetic variation influence the offspring's temperature preference (Paranjpe et al., 2013). Similarly, a study on brown anole lizards (*Anolis sagrei*) found no differences in and no heritability of thermoregulatory behavior in two populations from contrasting thermal environments (Logan et al., 2018).

Interestingly, the average preferred temperature we observed in this study (13°C) matches the temperature corresponding to peak immune activity in some of these Icelandic populations (Franke et al., 2017, 2019). Previous work using sticklebacks from Lake Mývatn (sympatric population 2) showed that both warm- and cold-habitat sticklebacks had improved acquired immunity at 13°C (Franke et al., 2017, 2019). Such immunity benefits of lower temperatures may also apply to other species, as warmer environments are associated with increased disease risk, virulence, and parasite development (Altizer et al., 2013; Franke et al., 2017; Harvell et al., 2002; Macnab & Barber, 2011).

Given that preferred temperature often coincides with optimum temperature for growth, survival, and offspring performance (Díaz et al., 2007; Jobling, 1981; Kellogg & Gift, 1983; Paranjpe et al., 2013; but see Clark et al., 2022; Huey & Bennett, 1987; MacLean et al., 2019), future work should investigate whether temperature preference reflects optimal physiological performance in these populations (Artacho et al., 2015; Gilbert & Miles, 2017; Köhler et al., 2011). However, even if performance peaks at a relatively low temperature (as is the case for immune activity), sticklebacks inhabiting warm habitats are clearly able to persist at much higher temperatures during the summer months (Table 1). Hence, we suggest that preferred temperature alone may be a poor indicator of adaptation and evolutionary potential in relation to the thermal environment.

Our results also raise the question of why warm-habitat fish from sympatric populations are found at non-preferred temperatures in the summer, even though they are not restricted by geographic barriers. A plausible explanation is that although only water temperature differed between the two chambers in our experimental set-up, temperature is not the only difference between warm and cold habitats in the wild. Habitat choice is based on many biotic and abiotic factors, which can lead to trade-offs. For example, predation risk may be lower in warm habitats because large piscivorous salmonids are less able to cope with high temperatures (Eliason et al., 2011). Moreover, warm habitats may provide a longer breeding season, leading to a higher reproductive output each annual cycle (Hovel et al., 2017). Previous work has also found differences in prey type availability between these warm and cold habitats in Iceland (Kreiling et al., 2018). Lastly, it is possible that warm-habitat sticklebacks are found at these sites due to social interactions, such as competition or social inertia, rather than active habitat choice (Jacob et al., 2018; Stodola & Ward, 2017).

A potential caveat of our study is that all experimental fish were acclimated to a common temperature before the test, which could have led to a plastic response for a similar preferred temperature (MacLean et al., 2019). Nevertheless, we believe this is unlikely because we still observed substantial among-individual variation in temperature preferences, ranging from 8 to 16°C (Figure 1). In addition, we have previously shown that metabolic rate differences between warm- and cold-habitat sticklebacks persist after similar long-term acclimation to a common temperature in the laboratory; this is the case for both allopatric and sympatric population pairs (Pilakouta et al., 2020). Prior work in many fish species, including sticklebacks, has also shown that acclimation temperature does not influence the final preferred temperature (Díaz et al., 2007; Habary et al., 2017; Pérez et al., 2003; Røed, 1979; Tabin et al., 2018, but see Crawshaw, 1975). For example, Røed (1979) showed that sticklebacks acclimated to different temperatures for different amounts of time all showed similar preferred temperatures. Similarly, a study on a coral reef fish (*Chromis viridis*) found that preferences for cooler water persist after prolonged acclimation to high temperatures due to an inability to acclimate at the level of the metabolic rate (Habary et al., 2017).

In sum, we find no evidence for a divergence in temperature preference between natural populations that have been exposed to contrasting thermal regimes for many generations. Our findings highlight the need to re-evaluate the common assumption that temperature preferences in ectotherms will readily evolve in response to climate change (Gilbert & Miles, 2017; Huey et al., 2012; Kearney et al., 2009). Furthermore, the fact that warm-habitat fish can persist at high temperatures despite a preference for lower temperatures suggests that preferred temperature alone may be a poor indicator of a population's adaptive potential to a novel thermal environment.

AUTHOR CONTRIBUTIONS

Shaun S. Killen: Conceptualization (equal); funding acquisition (equal); project administration (equal); supervision (equal); writing – review and editing (supporting). **Bjarni K. Kristjánsson:** Resources (equal); writing – review and editing (supporting). **Skúli Skúlason:** Resources (equal); writing – review and editing (supporting). **Jan Lindstrom:** Conceptualization (equal); funding acquisition (equal); project administration (supporting); supervision (supporting); writing – review and editing (supporting). **Neil B. Metcalfe:** Conceptualization (equal); funding acquisition (equal); project administration (supporting); supervision (supporting); writing – review and editing (supporting). **Kevin J. Parsons:** Conceptualization (equal); funding acquisition (equal); project administration (equal); supervision (equal); writing – review and editing (supporting). **Natalie Pilakouta:** Conceptualization (equal); data curation (lead); formal analysis (lead); investigation (lead); methodology (equal); visualization (lead); writing – original draft (lead); writing – review and editing (lead).

ACKNOWLEDGMENTS

We thank Iain Hill, Tiffany Armstrong, Anna Persson, and Kári Heiðar Árnason for their help with fieldwork in Iceland and Joseph Humble for assistance with animal husbandry.

CONFLICT OF INTEREST

The authors declare that they have no competing interests.

DATA AVAILABILITY STATEMENT

All relevant data have been uploaded to the Dryad Digital Repository: <https://doi.org/10.5061/dryad.n2z34tn14.s>.

ORCID

Natalie Pilakouta  <https://orcid.org/0000-0001-8503-520X>

Shaun S. Killen  <https://orcid.org/0000-0003-4949-3988>

REFERENCES

- Altizer, S., Ostfeld, R. S., Johnson, P. T., Kutz, S., & Harvell, C. D. (2013). Climate change and infectious diseases: From evidence to a predictive framework. *Science*, 341, 514–519.
- Artacho, P., Saravia, J., Ferrandiere, B. D., Perret, S., & Galliard, J. F. (2015). Quantification of correlational selection on thermal physiology, thermoregulatory behavior, and energy metabolism in lizards. *Ecology and Evolution*, 5, 3600–3609.

- Buckley, L. B., Huey, R. B., & Kingsolver, J. G. (2022). Asymmetry of thermal sensitivity and the thermal risk of climate change. *Global Ecology and Biogeography*, 31, 2231–2244.
- Catullo, R. A., Llewelyn, J., Phillips, B. L., & Moritz, C. C. (2019). The potential for rapid evolution under anthropogenic climate change. *Current Biology*, 29, 996–1007.
- Clark, T. D., Scheuffele, H., Pratchett, M. S., & Skeeles, M. R. (2022). Behavioural temperature regulation is a low priority in a coral reef fish (*Plectropomus leopardus*): Insights from a novel behavioural thermoregulation system. *Journal of Experimental Biology*, 225, jeb244212.
- Crawshaw, L. I. (1975). Attainment of the final thermal preferendum in brown bullheads acclimated to different temperatures. *Comparative Biochemistry and Physiology Part A: Physiology*, 52, 171–173.
- Crozier, L. G., & Hutchings, J. A. (2014). Plastic and evolutionary responses to climate change in fish. *Evolutionary Applications*, 7, 68–87.
- Díaz, F., Re, A. D., González, R. A., Sánchez, L. N., Leyva, G., & Valenzuela, F. (2007). Temperature preference and oxygen consumption of the largemouth bass *Micropterus salmoides* (Lacepede) acclimated to different temperatures. *Aquaculture Research*, 38, 1387–1394.
- Einarsson, A. (1982). The palaeolimnology of Lake Mývatn, northern Iceland: Plant and animal microfossils in the sediment. *Freshwater Biology*, 12, 63–82.
- Einarsson, Á., Stefánsdóttir, G., Jóhannesson, H., Ólafsson, J. S., Gíslason, G. M., Wakana, I., Gudbergsson, G., & Gardarsson, A. (2004). The ecology of Lake Myvatn and the River Laxá: Variation in space and time. *Aquatic Ecology*, 38, 317–348.
- Eliason, E. J., Clark, T. D., Hague, M. J., Hanson, L. M., Gallagher, Z. S., Jeffries, K. M., Gale, M. K., Patterson, D. A., Hinch, S. G., & Farrell, A. P. (2011). Differences in thermal tolerance among sockeye salmon populations. *Science*, 332, 109–112.
- Fangue, N. A., Podrabsky, J. E., Crawshaw, L. I., & Schulte, P. M. (2009). Countergradient variation in temperature preference in populations of killifish *Fundulus heteroclitus*. *Physiological and Biochemical Zoology*, 82, 776–786.
- Franke, F., Armitage, S. A., Kutzer, M. A., Kurtz, J., & Scharsack, J. P. (2017). Environmental temperature variation influences fitness trade-offs and tolerance in a fish-tapeworm association. *Parasites & Vectors*, 10, 252.
- Franke, F., Raifarh, N., Kurtz, J., & Scharsack, J. P. (2019). Consequences of divergent temperature optima in a host–parasite system. *Oikos*, 128, 869–880.
- Gilbert, A. L., & Miles, D. B. (2017). Natural selection on thermal preference, critical thermal maxima and locomotor performance. *Proceedings of the Royal Society. B, Biological Sciences*, 284, 20170536.
- Habary, A., Johansen, J. L., Nay, T. J., Steffensen, J. F., & Rummer, J. L. (2017). Adapt, move or die – How will tropical coral reef fishes cope with ocean warming? *Global Change Biology*, 23, 566–577.
- Harvell, C. D., Mitchell, C. E., Ward, J. R., Altizer, S., Dobson, A. P., Ostfeld, R. S., & Samuel, M. D. (2002). Climate warming and disease risks for terrestrial and marine biota. *Science*, 296(5576), 2158–2162.
- Hight, G. A. (1965). *The saga of Grettir the strong*. Dent.
- Hovel, R. A., Carlson, S. M., & Quinn, T. P. (2017). Climate change alters the reproductive phenology and investment of a lacustrine fish, the three-spine stickleback. *Global Change Biology*, 23, 2308–2320.
- Huey, R. B., & Bennett, A. F. (1987). Phylogenetic studies of coadaptation: Preferred temperatures versus optimal performance temperatures of lizards. *Evolution*, 41, 1098–1115.
- Huey, R. B., Kearney, M. R., Krockenberger, A., Holtum, J. A., Jess, M., & Williams, S. E. (2012). Predicting organismal vulnerability to climate warming: Roles of behaviour, physiology and adaptation. *Philosophical Transactions of The Royal Society B Biological Sciences*, 367, 1665–1679.
- Jacob, S., Laurent, E., Haegeman, B., Bertrand, R., Prunier, J. G., Legrand, D., Cote, J., Chaine, A. S., Loreau, M., Clobert, J., & Schtickzelle, N. (2018). Habitat choice meets thermal specialization: Competition with specialists may drive suboptimal habitat preferences in generalists. *Proceedings of the National Academy of Sciences of the United States of America*, 115, 11988–11993.
- Jobling, M. (1981). Temperature tolerance and the final preferendum rapid methods for the assessment of optimum growth temperatures. *Journal of Fish Biology*, 19, 439–455.
- Kearney, M., Shine, R., & Porter, W. P. (2009). The potential for behavioural thermoregulation to buffer “cold-blooded” animals against climate warming. *Proceedings of the National Academy of Sciences of the United States of America*, 106, 3835–3840.
- Kellogg, R. L., & Gift, J. (1983). Relationship between optimum temperatures for growth and preferred temperatures for the young of four fish species. *Transactions of the American Fisheries Society*, 112, 424–430.
- Killen, S. S. (2014). Growth trajectory influences temperature preference in fish through an effect on metabolic rate. *The Journal of Animal Ecology*, 83, 1513–1522.
- Köhler, A., Sadowska, J., Olszewska, J., Trzeciak, P., Berger-Tal, O., & Tracy, C. R. (2011). Staying warm or moist? Operative temperature and thermal preferences of common frogs (*Rana temporaria*), and effects on locomotion. *Herpetological Journal*, 21, 17–26.
- Komaki, S., Sutoh, Y., Kobayashi, K., Saito, S., Saito, C. T., Igawa, T., & Lau, Q. (2020). Hot spring frogs (*Buergeria japonica*) prefer cooler water to hot water. *Ecology and Evolution*, 10, 9466–9473.
- Kreiling, A.-K., Ólafsson, J., Pálsson, S., & Kristjánsson, B. (2018). Chironomidae fauna of springs in Iceland: Assessing the ecological relevance behind Tuxen's spring classification. *Journal of Limnology*, 77(1s), 145.
- Logan, M. L., Curlis, J. D., Gilbert, A. L., Miles, D. B., Chung, A. K., McGlothlin, J. W., & Cox, R. M. (2018). Thermal physiology and thermoregulatory behaviour exhibit low heritability despite genetic divergence between lizard populations. *Proceedings of the Royal Society B*, 285, 20180697.
- MacLean, H. J., Overgaard, J., Kristensen, T. N., Lyster, C., Hessner, L., Olsvig, E., & Sørensen, J. G. (2019). Temperature preference across life stages and acclimation temperatures investigated in four species of *Drosophila*. *Journal of Thermal Biology*, 86, 102428.
- Macnab, V., & Barber, I. (2011). Some (worms) like it hot: Fish parasites grow faster in warmer water, and alter host thermal preferences. *Global Change Biology*, 18, 1540–1548.
- MacNaughton, C. J., Kovachik, C., Charles, C., & Enders, E. C. (2018). Using the shuttlebox experimental design to determine temperature preference for juvenile Westslope Cutthroat Trout (*Oncorhynchus clarkii lewisi*). *Conservation. Physiology*, 6, coy018.
- Malmos, K. G., Lüdeking, A. H., Vosegaard, T., Aagaard, A., Bechsgaard, J., Sørensen, J. G., & Bilde, T. (2021). Behavioural and physiological responses to thermal stress in a social spider. *Functional Ecology*, 35(12), 2728–2742.
- Martin, T. L., & Huey, R. B. (2008). Why “suboptimal” is optimal: Jensen's inequality and ectotherm thermal preferences. *The American Naturalist*, 171, E102–E118.
- McCaughey, R. W. (1977). Laboratory methods for determining temperature preference. *Journal of the Fisheries Board of Canada*, 34, 749–752.
- Paranjpe, D. A., Bastiaans, E., Patten, A., Cooper, R. D., & Sinervo, B. (2013). Evidence of maternal effects on temperature preference in side-blotched lizards: Implications for evolutionary response to climate change. *Ecology and Evolution*, 3, 1977–1991.
- Pépino, M., Goyer, K., & Magnan, P. (2015). Heat transfer in fish: Are short excursions between habitats a thermoregulatory behaviour to exploit resources in an unfavourable thermal environment? *Journal of Experimental Biology*, 218, 3461–3467.

- Pérez, E., Díaz, F., & Espina, S. (2003). Thermoregulatory behavior and critical thermal limits of the angelfish *Pterophyllum scalare* (Pisces: Cichlidae). *Journal of Thermal Biology*, *28*, 531–537.
- Pilakouta, N., Humble, J., Hill, I. D. C., Arthur, J., Costa, A., Smith, B., Killen, S. S., Kristjánsson, B. K., Skúlason, S., Lindström, J., Metcalfe, N. B., & Parsons, K. J. (2023). Testing the predictability of morphological evolution in contrasting thermal environments. *Evolution*, qpac018. <https://doi.org/10.1093/evolut/qpac018>
- Pilakouta, N., Killen, S. S., Kristjánsson, B. K., Skúlason, S., Lindström, J., Metcalfe, N. B., & Parsons, K. J. (2020). Multigenerational exposure to elevated temperatures leads to a reduction in standard metabolic rate in the wild. *Functional Ecology*, *34*, 1205–1214.
- Pilakouta, N., O'Donnell, P., Crespel, A., Levet, M., Claireaux, M., Humble, J., Kristjánsson, B. K., Skúlason, S., Lindström, J., Metcalfe, N. B., Killen, S. S., & Parsons, K. J. (2023). A warm environment can reduce sociability in an ectotherm. *Global Change Biology*, *29*, 206–214.
- Pörtner, H. O., & Farrell, A. P. (2008). Physiology and climate change. *Science*, *32*, 690–692.
- R Development Core Team. (2018). *R: A language and environment for statistical computing*. R Foundation for Statistical Computing <http://www.R-project.org>
- Røed, K. H. (1979). The temperature preference of the three-spined stickleback, *Gasterosteus aculeatus* L. (Pisces), collected at different seasons. *Sarsia*, *64*, 137–141.
- Schurmann, H., & Steffensen, J. F. (1992). Lethal oxygen levels at different temperatures and the preferred temperature during hypoxia of the Atlantic cod, *Gadus morhua* L. *Journal of Fish Biology*, *41*, 927–934.
- Sih, A., Ferrari, M. C., & Harris, D. J. (2011). Evolution and behavioural responses to human-induced rapid environmental change. *Evolutionary Applications*, *4*, 367–387.
- Stevens, E. D., & Fry, F. E. J. (1974). Heat transfer and body temperatures in non-thermoregulatory teleosts. *Canadian Journal of Zoology*, *52*, 1137–1143.
- Stodola, K. W., & Ward, M. P. (2017). The emergent properties of conspecific attraction can limit a species' ability to track environmental change. *The American Naturalist*, *189*, 726–733.
- Tabin, J. A., Aspiras, A., Martineau, B., Riddle, M., Kowalko, J., Borowsky, R., Rohner, N., & Tabin, C. J. (2018). Temperature preference of cave and surface populations of *Astyanax mexicanus*. *Developmental Biology*, *441*, 338–344.
- Tuomainen, U., & Candolin, U. (2011). Behavioural responses to human-induced environmental change. *Biological Reviews*, *86*, 640–657.
- van Jaarsveld, B., Bennett, N. C., Kemp, R., Czenze, Z. J., & McKechnie, A. E. (2021). Heat tolerance in desert rodents is correlated with microclimate at inter- and intraspecific levels. *Journal of Comparative Physiology B*, *191*, 575–588.
- Westhoff, J. T., & Rosenberger, A. E. (2016). A global review of freshwater crayfish temperature tolerance, preference, and optimal growth. *Reviews in Fish Biology and Fisheries*, *26*, 329–349.
- Wickham, H. (2016). *ggplot2: Elegant graphics for data analysis*. Springer.
- Zuo, W., Moses, M. E., West, G. B., Hou, C., & Brown, J. H. (2011). A general model for effects of temperature on ectotherm ontogenetic growth and development. *Proceedings of the Royal Society B: Biological Sciences*, *279*, 1840–1846.

How to cite this article: Pilakouta, N., Killen, S. S., Kristjánsson, B. K., Skúlason, S., Lindström, J., Metcalfe, N. B., & Parsons, K. J. (2023). Geothermal stickleback populations prefer cool water despite multigenerational exposure to a warm environment. *Ecology and Evolution*, *13*, e9654. <https://doi.org/10.1002/ece3.9654>